

2018 KS1 School Dashboard

for governors & school leaders

Produce custom dashboards
at fftaspire.org

Adderlane Academy

LA Northumberland DFE 9292001 Produced November 2018 Version 1

What it is

Seven easy-to-use reports that help governors and school leaders to evaluate school performance using the latest 2018 DfE school performance indicators.

What it tells you

- What are the strengths and areas for improvement in your school?
- How does attainment and pupil progress compare to the national average over the last three years?
- How are you performing in different subjects?
- Do you have any under-performing groups of pupils?
- How might the context of your school affect performance?
- How does pupil attendance compare to the national average?

About the data shown

1 2 3

Actual results

Actual results for your school, using a range of measures such as averages and thresholds.



Gauges

These display headline indicators and whether actual results and pupils' progress are in line with, or significantly above or below, the national average.

ESTIMATED



1 2 3

Pupil progress

The value added progress that your pupils have made from one key stage to the next. FFT compares your actual results to the estimated results based on the progress of similar pupils nationally.



Statistical significance

Green plus signs and red minus signs highlight where either actual results or pupils' progress is significantly above or below the national average.



Trends

The dashboard analyses school performance over 3-5 years. Any significant year-on-year improvement is highlighted using an up arrow. Significant declines in performance are highlighted with a down arrow.



Strengths & weaknesses

These highlight key pupil groups and subjects where progress is above or below the national average.

Working in partnership with



Data sources

Generated from FFT Aspire which includes data sourced from the DfE (National Pupil Database) and data calculated by FFT. FFT is accredited as a DfE supplier to receive early access to ASP data. Headline performance indicators will be consistent with the DfE School Performance Tables and ASP.

Overview

KS1 Attainment 2018 · Actual results

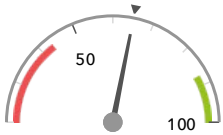
20 pupils

% Expected Standard + (Re, Wr, Ma)

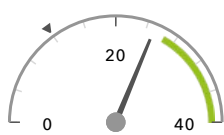
% Higher Standard (Re, Wr, Ma)

65%

25%



In line with the national average (65%) ◀



In line with the national average (12%) ◀

KS1 Progress 2018 · Value Added

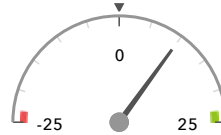
20 matched pupils

% Expected Standard + (Re, Wr, Ma)

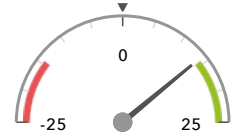
% Higher Standard (Re, Wr, Ma)

+10%

+14%



In line with the national average (0%) ◀



In line with the national average (0%) ◀

KS1 higher and lower performing pupil groups 2018

	Higher performing	Lower performing
Overall achievement pupil progress	Not FSM (11) + Summer Term (7) Lower attainers (10) +	
KS1 reading achievement pupil progress	Not FSM (11) Spring Term (9) Male (11)	
KS1 writing achievement pupil progress	Not FSM (11) Not FSM (in last 6 years) (10) Lower attainers (10)	
KS1 mathematics achievement pupil progress	Summer Term (7) Higher attainers (5) Not FSM (11)	

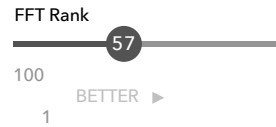
Attainment & progress

KS1 Attainment 2018

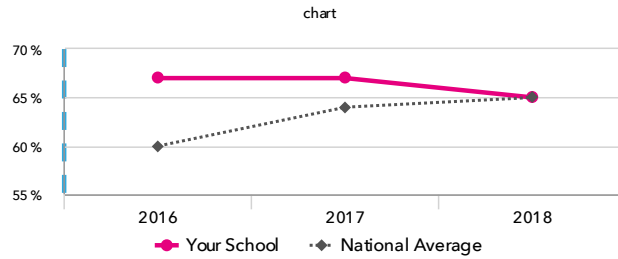
20 pupils

% Expected Standard + (Re, Wr, Ma)

65%



In line with the national average (65%)

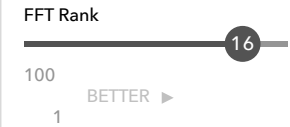


KS1 Progress 2018

20 matched pupils

% Expected Standard + (Re, Wr, Ma)

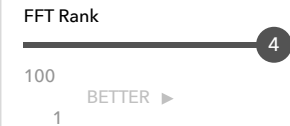
+10%



In line with the national average (0%)

% Higher Standard (Re, Wr, Ma)

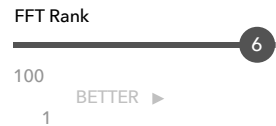
+14%



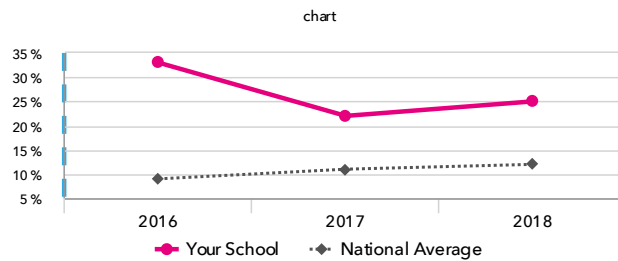
In line with the national average (0%)

% Higher Standard (Re, Wr, Ma)

25%



In line with the national average (12%)



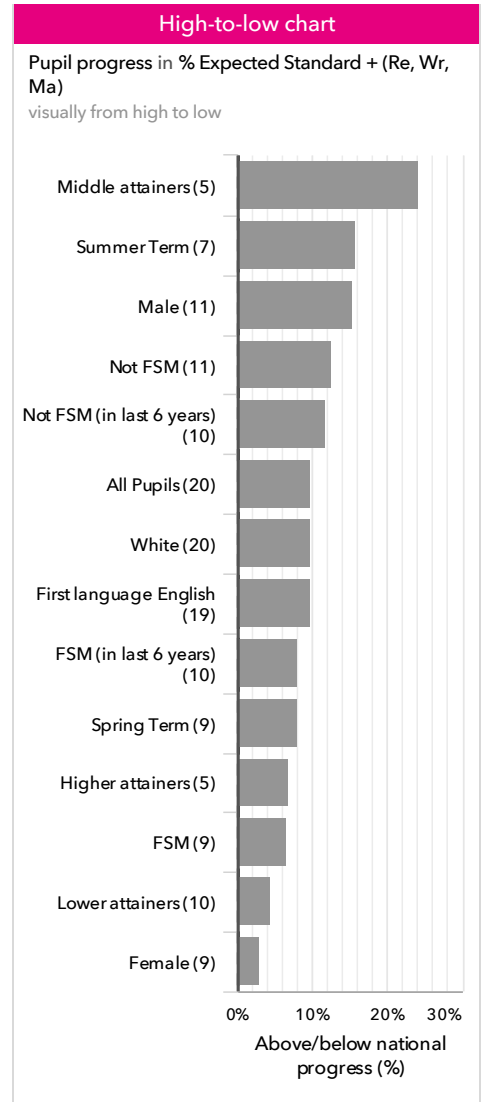
KS1 performance summary

	Actual results			Pupil progress		
	2016	2017	2018	2016	2017	2018
Number of Pupils / % Matched	15	18	20	100%	100%	100%
% Expected Standard + (Re, Wr, Ma)	67%	67%	65%	+19%	+10%	+10%
% Higher Standard (Re, Wr, Ma)	33% +	22%	25%	+31% +	+14%	+14%
% Expected Standard + Reading	87%	89%	75%	+20%	+19%	+8%
% Higher Standard Reading	53% +	28%	25%	+42% +	+6% ↓	+4%
% Expected Standard + Writing	87%	78%	80%	+31% +	+16%	+20%
% Higher Standard Writing	33% +	22%	25%	+28% +	+10%	+11%
% Expected Standard + Maths	73%	83%	75%	+10%	+14%	+7%
% Higher Standard Maths	33%	33%	25%	+25% +	+16%	+7%
% Level 2+ (Re, Wr, Ma)	-	-	-	-	-	-
% Level 2B+ (Re, Wr, Ma)	-	-	-	-	-	-
% Level 3+ (Re, Wr, Ma)	-	-	-	-	-	-
Average Point Score (Re, Wr, Ma)	-	-	-	-	-	-

Pupil groups

KS1 Pupil groups performance 2018

	Pupils	Actual results		Pupil progress		
		% Expected Standard + (Re, Wr, Ma)	% Higher Standard (Re, Wr, Ma)	% Expected Standard + (Re, Wr, Ma)	% Higher Standard (Re, Wr, Ma)	
Summary	All Pupils	20	65%	25%	+10%	+14%
Gender	Male	11	64%	18%	+15%	+11%
	Female	9	67%	33%	+3%	+18%
Prior Attainment	Higher attainers	5	100%	80% +	+7%	+42%
	Middle attainers	5	100%	20%	+24%	+15%
	Lower attainers	10	30%	0%	+4%	-0%
Pupil Premium	FSM (in last 6 years)	10	60%	20%	+8%	+13%
	Not FSM (in last 6 years)	10	70%	30%	+12%	+15%
FSM	FSM	9	56%	11%	+7%	+4%
	Not FSM	11	73%	36% +	+13%	+23%
Term of Birth	Summer Term	7	57%	14%	+16%	+5%
	Spring Term	9	78%	44% +	+8%	+29% +
	Autumn Term	4	50%	0%	+4%	-2%
SEN Group	SEN Support	4	25%	0%	+16%	-0%
EAL	First language not English	1	100%	100%	+11%	+87%
	First language English	19	63%	21%	+10%	+10%
Ethnicity	White	20	65%	25%	+10%	+14%



Subjects

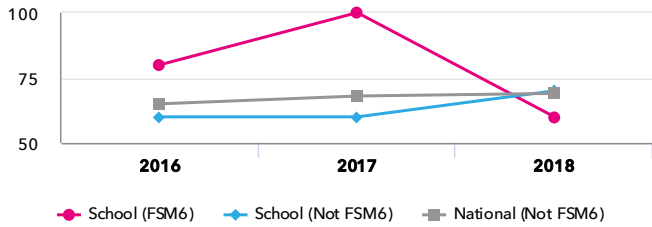
KS1 subject performance 2018

	Actual results			Pupil progress			Actual results over time		
	2016	2017	2018	2016	2017	2018			
Number of Pupils / % Matched	15	18	20	100%	100%	100%			
Reading									
% Expected Standard +	87%	89%	75%	+20%	+19%	+8%	% Expected Standard + Reading chart		
% Higher Standard	53% +	28%	25%	+42% +	+6% ↓	+4%			
% Level 2+	-	-	-	-	-	-			
% Level 2B+	-	-	-	-	-	-			
% Level 3+	-	-	-	-	-	-			
Average Point Score	-	-	-	-	-	-			
Writing									
% Expected Standard +	87%	78%	80%	+31% +	+16%	+20%	% Expected Standard + Writing chart		
% Higher Standard	33% +	22%	25%	+28% +	+10%	+11%			
% Level 2+	-	-	-	-	-	-			
% Level 2B+	-	-	-	-	-	-			
% Level 3+	-	-	-	-	-	-			
Average Point Score	-	-	-	-	-	-			
Maths									
% Expected Standard +	73%	83%	75%	+10%	+14%	+7%	% Expected Standard + Maths chart		
% Higher Standard	33%	33%	25%	+25% +	+16%	+7%			
% Level 2+	-	-	-	-	-	-			
% Level 2B+	-	-	-	-	-	-			
% Level 3+	-	-	-	-	-	-			
Average Point Score	-	-	-	-	-	-			
Science									
% Expected Standard +	100%	100%	100%	-	-	-	% Expected Standard + Science chart		
% Level 2+	-	-	-	-	-	-			
% Level 3+	-	-	-	-	-	-			
Average Point Score	-	-	-	-	-	-			

Disadvantaged pupils

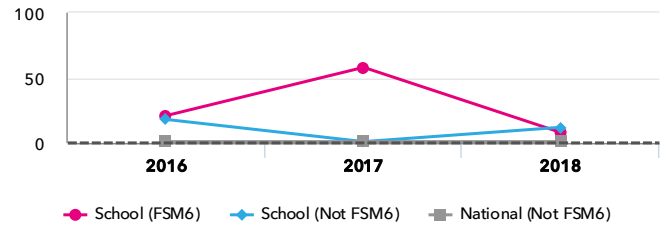
KS1 attainment for disadvantaged pupils 2018

% Expected Standard + (Re, Wr, Ma)

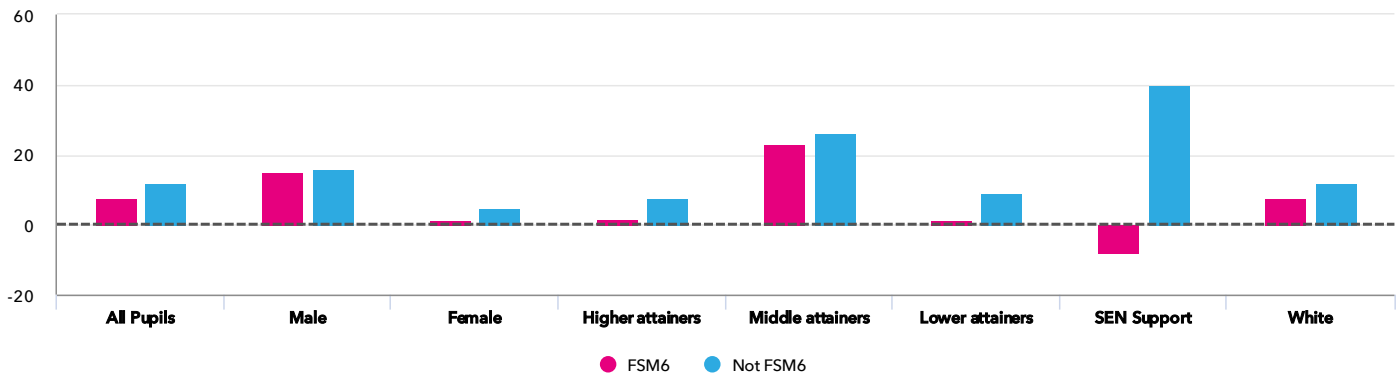


KS1 progress for disadvantaged pupils 2018

% Expected Standard + (Re, Wr, Ma)



Progress gap % Expected Standard + (Re, Wr, Ma)

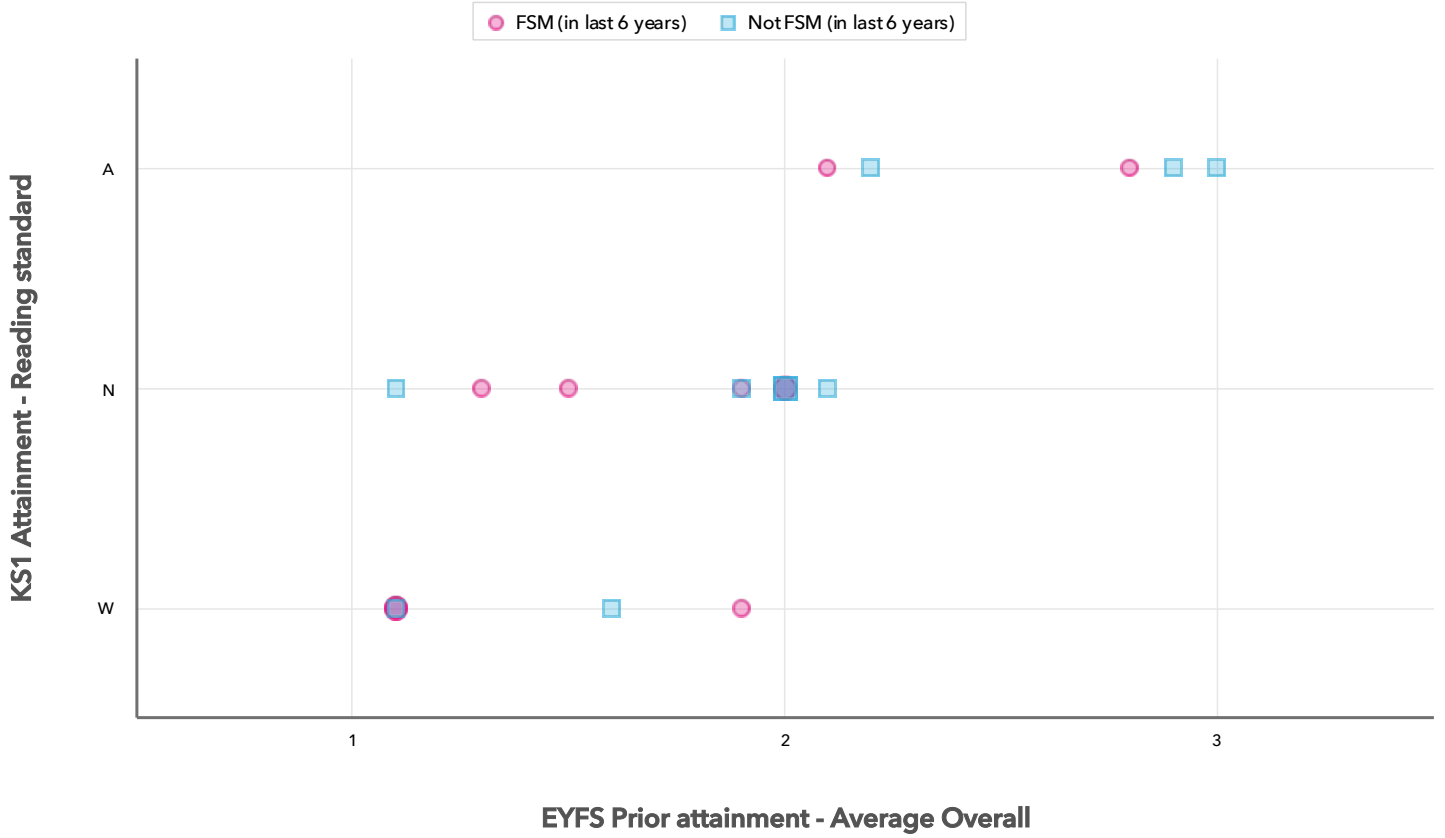


Attainment & progress

Pupils	Attainment			Progress					
	FSM6	Not FSM6	% Expected Standard + (Re, Wr, Ma)			FSM6	Not FSM6	Gap	
			FSM6	Not FSM6	Gap				
Summary	All Pupils	10	10	60%	70%	-10%	8%	12%	-4%
Gender	Male	5	6	60%	67%	-7%	15%	16%	-1%
	Female	5	4	60%	75%	-15%	1%	5%	-4%
Prior Attainment	Higher attainers	1	4	100%	100%	0%	2%	8%	-6%
	Middle attainers	3	2	100%	100%	0%	23%	26%	-3%
	Lower attainers	6	4	33%	25%	8%	1%	9%	-8%
SEN Group	SEN Support	2	2	0%	50%	-50%	-8%	40%	-48%
Ethnic Group	White	10	10	60%	70%	-10%	8%	12%	-4%

Scatterplot

KS1 Pupil scatterplot 2018 20 pupils highlighted by Pupil Premium



Context

Context · Year 2 · 2017 / 2018

		Pupils	Proportion	
			School	National
Summary	All Pupils	20	100%	100%
Gender	Male	11	55%	51%
	Female	9	45%	49%
Prior Attainment	Higher attainers	5	25%	35%
	Middle attainers	5	25%	32%
	Lower attainers	10	50%	29%
Pupil Premium	FSM (in last 6 years)	10	50%	20%
	Not FSM (in last 6 years)	10	50%	79%
FSM	FSM	9	45%	14%
	Not FSM	11	55%	86%
Term of Birth	Summer Term	7	35%	34%
	Spring Term	9	45%	32%
	Autumn Term	4	20%	34%
SEN Group	SEN Support	4	20%	12%
EAL	First language not English	1	5%	20%
	First language English	19	95%	79%
Ethnicity	White	20	100%	74%

Absence · Year 2 · 2017 / 2018

		Pupils	Absence		Persistent absentees	
			School	National	School	National
Summary	All Pupils	20	4%	4%	5%	8%
Gender	Male	11	3%	4%	0%	9%
	Female	9	4%	4%	11%	8%
Prior Attainment	Higher attainers	5	1%	3%	0%	4%
	Middle attainers	5	5%	4%	20%	7%
	Lower attainers	10	4%	6%	0%	14%
Pupil Premium	FSM (in last 6 years)	10	5%	6%	10%	17%
	Not FSM (in last 6 years)	10	3%	4%	0%	6%
FSM	FSM	9	5%	6%	11%	19%
	Not FSM	11	3%	4%	0%	7%
Term of Birth	Summer Term	7	3%	4%	0%	9%
	Spring Term	9	5%	4%	11%	8%
	Autumn Term	4	2%	4%	0%	8%
SEN Group	SEN Support	4	5%	6%	0%	15%
EAL	First language not English	1	2%	5%	0%	10%
	First language English	19	4%	4%	5%	8%
Ethnicity	White	20	4%	4%	5%	8%